



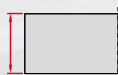
PRO 5 PB is a handy, portable pipe beveling machine suitable for milling edges of pipes made of carbon and stainless steels, aluminum alloys and copper-nickels.

It can be used efficiently by a single operator. Self-centering expandable mandrels provide quick and proper alignment to a pipe or a tube prior to machining operations.

Depending on the tool bits in use PRO 5 PB can perform external beveling, J-beveling, internal calibration and facing pipes from inside diameters of 32 mm (1.26") to outside diameters of 114 mm (4.49") or up to 140mm (5.51") as option. All these weld prep operations are made fast and easy. Up to three tool bits can be mounted and work, simultaneously.

According to users preferences and depending on site conditions PRO 5 PB machine can be operated with a high quality powerful pneumatic motor or top quality high torque electric motor.

Optional small spindle disc and ratchet wrench enable pipe machining in difficult to access and space restricted areas.



Max wall thickness  
12mm (0.47")  
up to OD 114mm (4.49")



ID 32-107mm (1.26 - 4.21")  
25-32 mm (1" - 1-1/4") /option/  
107-133mm (4.21 - 5.24") /option/



Facing off



Pipe OD beveling  
114mm (4.49")  
up to 140mm  
(5.51") /option/



J-groove beveling

Technical specifications		PRO 5 PB with electric motor	PRO 5 PB with pneumatic motor
Electric motor		1.100 W	-
Supply		110-120V/50-60Hz or 220-240V/50-60Hz	-
Rotational speed (nominal)		gear 1 – 0 to 90 rpm	-
		gear 2 – 0 to 300 rpm	-
Pneumatic drive		-	800 W
Air requirement		-	0,6 MPa (87 PSI)
Air consumption		-	1600 l/min (49.4 CFM)
Rotational speed (nominal)		-	90 rpm
Pipe diameter		32 mm ID to 114 mm OD (1.26–4.49")	32 mm ID to 114 mm OD (1.26–4.49")
Maximum pipe wall thickness for outside diameter	up to 114 mm	12 mm (0.47")	12 mm (0.47")
	114–124 mm*	10 mm (0.39")	10 mm (0.39")
	124–132 mm*	8 mm (0.31")	8 mm (0.31")
	132–140 mm*	6 mm (0.24")	6 mm (0.24")
Weight (incl. motor)		11 kg (24 lbs)	10 kg (22 lbs)

\* Available with the optional 140 mm spindle disk set.

#### Standard shipping set:

- PRO 5 PB (without motor, tool bits)
- Metal box
- Standard self-centering expandable mandrel for pipe ID Ø 32 – 107mm (1.26 – 4.21")
- 118mm spindle disc
- Jaw blocks (1,2,3,4,5,6) – 3 sets
- Set of tools
- Coolant container
- Operator's manual



Product Code: UKS-0472-10-00-00-0

#### OPTIONAL ACCESSORIES

Electric motor 230V with connection set



Electric motor 230V  
Product Code: SLN-000176

Connection set for electric motor  
Product Code: ZST-0472-11-00-00-1

Pneumatic motor  
Product Code:  
NPD-0472-03-00-00-0



Battery drive 18V  
with connection set



Connection set for battery drive  
Product Code: ZST-0472-22-00-00-0

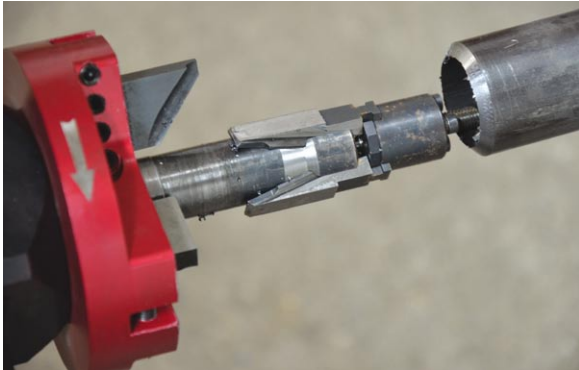


Battery drive for PRO-5 beveller  
incl. 2 batteries 18 V, 5.2 Ah  
Product Code: WRT-000021

## OPTIONAL ACCESSORIES

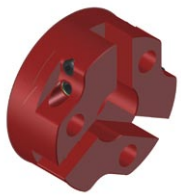


Small mandrel  
ID 25 – 32 mm (1" – 1-1/4")  
Product Code: TRZ-0472-21-00-00-0



Battery charger 18 V  
Product Code for Europe: LDW-000008  
Product Code for USA: LDW-000009  
Product Code for UK: LDW-0000010  
Product Code for Australia: LDW-0000011

Battery 18 V, 5.2 Ah  
Product Code: AKM-000087



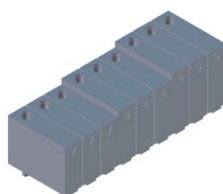
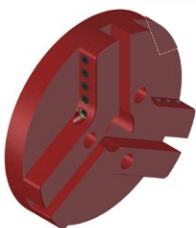
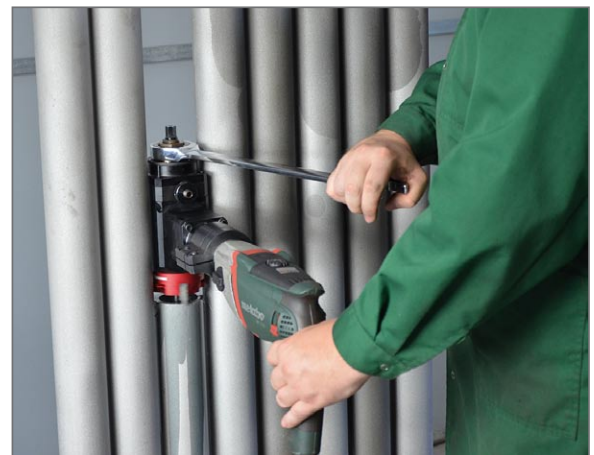
75 mm spindle disc  
Product Code:  
TRC-0472-12-00-00-0



Minimum distance between  
tubes is 75mm (2.95")



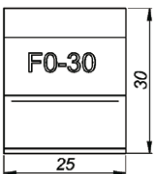
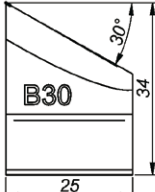
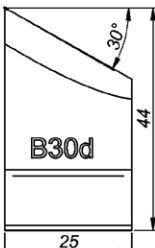
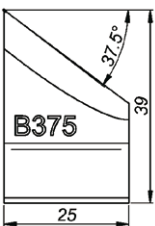
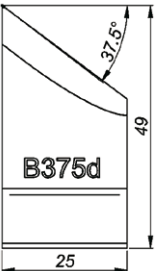
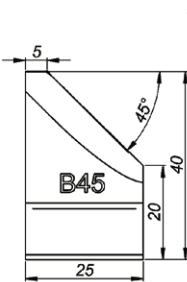
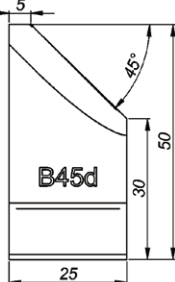
Ratchet wrench  
Product Code: KLC-000045



Extension set for OD Ø up to 140mm (5.51") including 140  
mm spindle disc and jaw blocks (7, 8, 9) – 3 sets  
Product Code: ZST-0472-15-00-00-0

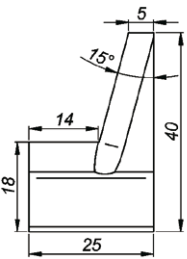
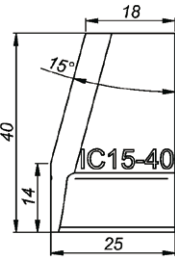
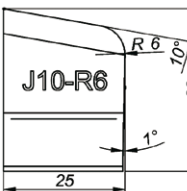
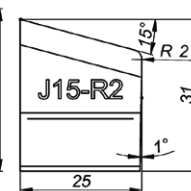


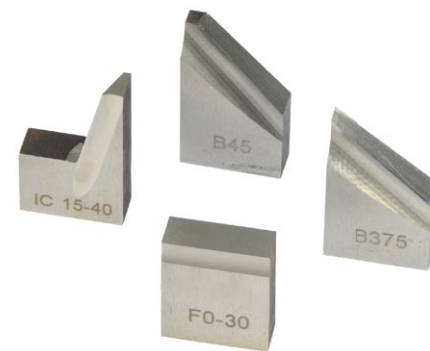


NOZ-000031	F0-30 0° facing tool bit	
NOZ-000032	B30 30° bevelling tool bit*	 
NOZ-000033	B30d 30° bevelling tool bit**	
NOZ-000036	B375 37.5° bevelling tool bit*	 
NOZ-000037	B375d 37.5° bevelling tool bit**	
NOZ-000040	B45 45° bevelling tool bit*	 
NOZ-000041	B45d 45° bevelling tool bit**	

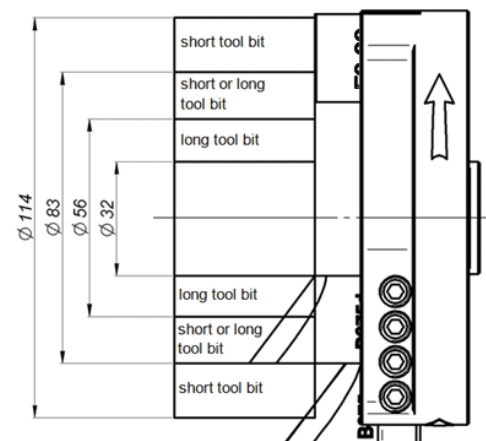
\* for diameters over 56 mm, if works together with 0° facing tool bit

\*\* for diameters under 83mm, if works together with 0° facing tool bit

NOZ-000052	IC15-40 15° internal calibration tool bit	 
NOZ-000053	IC15-40 15° internal calibration tool bit (for diameters over 56 mm)	
NOZ-000058	J10-R6 10° J-bevelling tool bit	 
NOZ-000057	J15-R2 15° J-bevelling tool bit	
NOZ-000059	J20-R8 20° J-bevelling tool bit	



Wide range of tool bits for various applications.



Together with 0° facing tool bit either standard or long beveling tool bits are in use depending on pipe diameter



Stainless steel machining is available by means of special tool bits

Cutting fluid  
0.5 kg (1.1 lbs)  
Product Code:  
OLJ-000004



Air preparation set  
Product Code:  
ZST-000021



PROMOTECH Sp. z o.o.  
ul. Elewatorska 23/1, 15-620 BIAŁYSTOK, POLAND  
tel. (+48 85) 678 34 05, fax (+48 85) 662 78 77  
marketing@promotech.eu www.promotech.eu

Your local dealer:



Turfschipper 118 2232 30 Watteringen telephone: 0174 225 225 telefax: 0174 - 225 220 e-mail: info@hatek.nl www.hatek.nl  
De Corantijn 79d 1689 AN Zwaag telephone: 0229-212 334 telefax: 0229-246 979 e-mail: info@hatek.nl www.hatek.nl